

### Features

- Compact design
- In-line mounted
- Quiet operation
- Instantaneous shutoff against reverse flow, low forward pressure opening
- Disc seats before reverse flow to avoid fluid shock on reverse pressure differential

### Construction

Valve Parts in Contact with Fluids		
<b>Body</b>	Brass	316L Stainless Steel
<b>Valve Seat</b>	NBR and EPDM seat at zero pressure in spring-loaded valves.	NBR
	Metal seated - leakage on air up to 65 SCFH.	Bubble Tight



### Nominal Ambient Temp. Ranges

8800 Series: -4°F to 221°F (-20°C to 105°C)

V012 Series: 32°F to 125°F (0°C to 52°C)

Refer to Engineering Section for details.

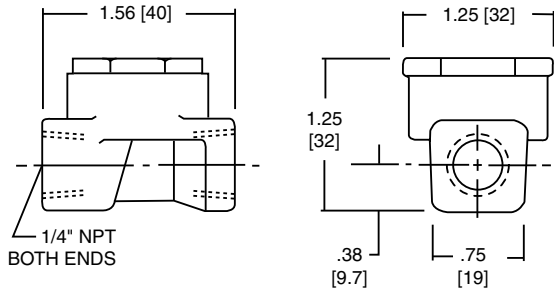
### Specifications (English units)

Pipe Size (in)	Orifice Size in (mm)	Flow Cv (Kv)	Operating Pressure (psi)	Maximum Operating Pressure Differential psi (bar) Air-Inert Gas, Water, and Light Oil	Max. Fluid Temp. °F (°C)	Catalog Number	Const. Ref.
<b>FORGED BRASS BODY with NBR Disc</b>							
1/4	9/32 (7)	.70 (.60)	1 (0.07)	150 (10)	200 (92)	V012 001	1
3/8	3/8 (10)	1.2 (1.03)	1 (0.07)	150 (10)	200 (92)	V012 002	2B
1/2	7/16 (11)	2.5 (2.14)	1 (0.07)	150 (10)	200 (92)	V012 003	2C
3/4	1/2 (13)	3.6 (3.09)	1 (0.07)	150 (10)	200 (92)	V012 004	2D
<b>STAINLESS STEEL BODY with NBR Disc</b>							
1/4	9/32 (7)	1.1 (0.95)	0 (0)	232 (16) ①	221 (105)	8800A90000N0000	3
1/2	1/2 (13)	5.3 (4.58)	0 (0)	232 (16) ①	221 (105)	8800A90200N0000	4
<b>FORGED BRASS BODY with EPDM Disc for Low-Pressure Steam</b>							
1/4	3/8 (10)	1.2 (1.03)	1 (0.07)	50 (3)	300 (147)	V012 010	2A
3/8	3/8 (10)	1.2 (1.03)	1 (0.07)	50 (3)	300 (147)	V012 011	2B
1/2	7/16 (11)	2.5 (2.14)	1 (0.07)	50 (3)	300 (147)	V012 012	2C
3/4	1/2 (13)	3.6 (3.09)	1 (0.07)	50 (3)	300 (147)	V012 013	2D
<b>FORGED BRASS BODY with Metal Seating for High-Pressure Steam</b>							
1/4	3/8 (10)	.70 (.60)	8 (0.55)	200 (14)	388 (196)	V012 014	2E
3/8	3/8 (10)	.70 (.60)	8 (0.55)	200 (14)	388 (196)	V012 015	2E
1/2	1/2 (13)	3.4 (2.91)	4 (0.28)	200 (14)	388 (196)	V012 016	2F
3/4	1/2 (13)	5.1 (4.37)	4 (0.28)	200 (14)	388 (196)	V012 017	2F

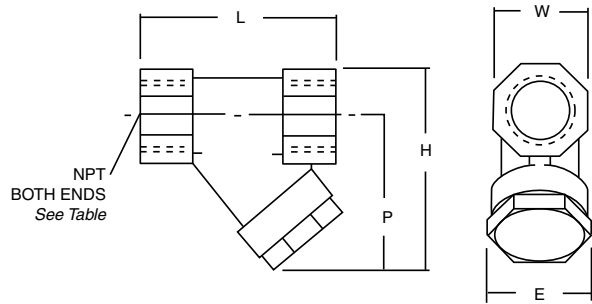
① Only for use with air or inert gas

Dimensions inches (mm)

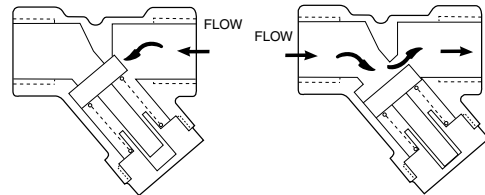
Const. Ref. 1



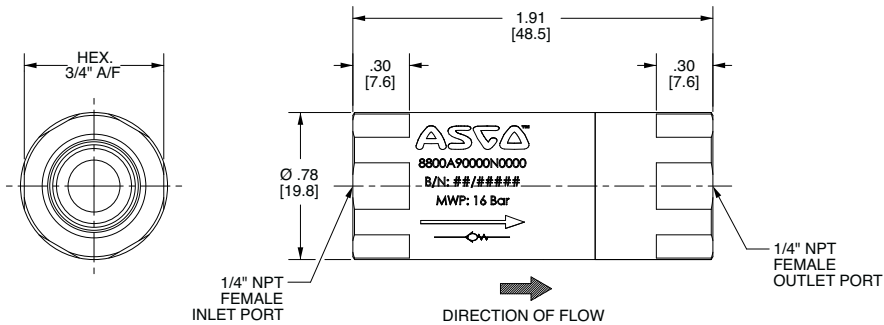
Const. Ref. 2



Const. Ref.	E	H	L	P	W
2A	1.16 [30]	2.03 [52]	1.91 [49]	1.56 [40]	0.88 [22]
2B	1.16 [30]	2.09 [53]	1.91 [49]	1.66 [42]	0.88 [22]
2C	1.16 [30]	2.38 [61]	2.28 [58]	1.84 [47]	1.09 [28]
2D	1.31 [33]	2.62 [67]	2.75 [70]	1.84 [47]	1.31 [33]
2E	1.16 [30]	2.38 [61]	2.28 [58]	1.84 [47]	1.09 [28]
2F	1.38 [35]	2.94 [75]	2.75 [70]	2.16 [55]	1.31 [33]



Const. Ref. 3



Const. Ref. 4

