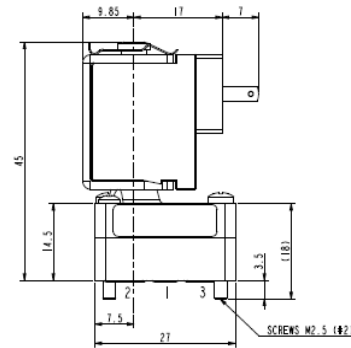
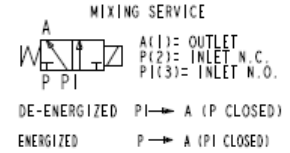
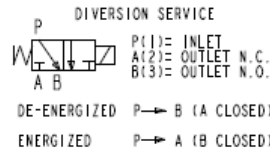
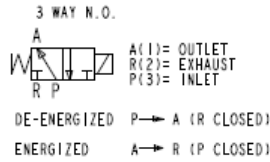
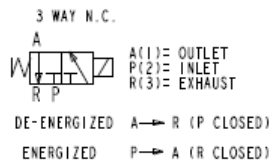


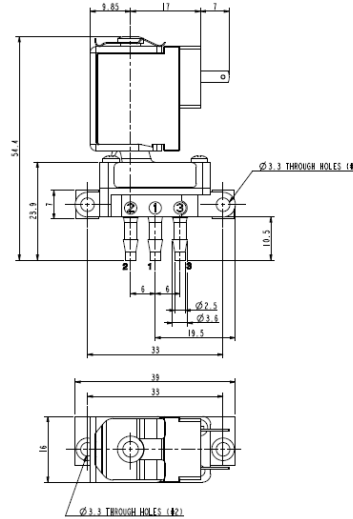


**MICRO SOLENOID VALVE - DRY**  
**3/2 - UF (Universal function)**  
**Direct acting - Total isolation**  
**Sub-base - Barbed ports**

**D351D04G-V06G**



**D351D04G**



**D351V06G**

► **GENERAL FEATURES**

Total isolation micro solenoid valve: the actuator is totally isolated from the fluid so that the wetted parts are just the body and the diaphragm.  
Reduced internal volume: 67µl. Possibility of disassembling for inspection.  
The parts subject to sliding friction are duly coated by PTFE (polytetrafluoroethylene) based self lubricating material.  
Suitable to shut off liquid and gaseous fluids (verify the compatibility of fluid with materials in contact).

► **TECHNICAL FEATURES**

Maximum allowable pressure (PS) 3 bar  
Opening time ~20ms  
Closing time ~30ms (D351D04G)  
~60ms (D351V06G)  
Fluid temperature -10°C +80°C  
Max viscosity 5°E (~37 cStokes or mm<sup>2</sup>/s)

► **MATERIALS IN CONTACT WITH FLUID**

Body PA 12 (polyamide)  
Sealing EPDM or FPM

► **COIL**

Continuous duty ED 100%  
Encapsulation material PA (polyamide) fiberglass reinforced  
Yoke External in zinc plated steel  
Insulation class F (155°C)  
Ambient temperature -10°C +60°C  
Electric connections DIN 46340 with micro plug connector  
Protection degree IP 65 (EN 60529) with micro plug connector  
Voltages DC 12-24V (+10% -5%)  
(Other voltages on request)

Port size	Orifice size (mm)	Differential pressure (bar)				Kv (m <sup>3</sup> /h)	Series and type		Power absorption			Sealings	Notes	Weight (kg)	
		Δ min	Δp max		Valve		Coil	AC (VA)		DC (W)					
			Gases					Liquids			Inrush				Holding
			AC	DC				AC	DC						
Sub-base	1,5	0	-	2	-	2	0,03	D351D04G	ZE30A	-	-	4	EPDM	1	0,040
Barbed-ports			-	2	-	2	D351V06G	-		-	FPM				

► **NOTES**

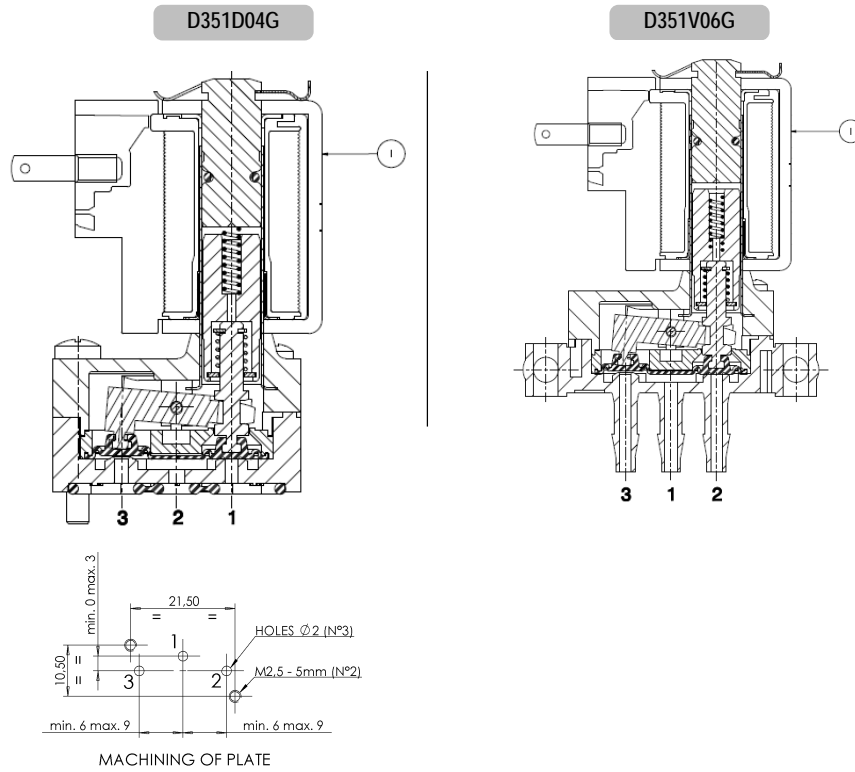
- Sealings: EPDM = Ethylene-propylene elastomer FPM = Fluoro-carbon elastomer  
1 - Suitable for vacuum at any port up to 530mmHg (0,7 bar)

1303/1704



# D351D04G-V06G

## ► SPARE PARTS



### Kit description

Coil

### Kit P.N.

ZE30A

### Consisting of:

Coil pos. 1

## ► MOUNTING

- Solenoid valve can be mounted in any position.
- Valves delivered with sealing O-rings.
- M2,5 screws for sub-base mountings have to be tightened at torque between 0,8 and 1,2 Nm.

THE VALIDITY OF REPORTED DATA IS REFERRED TO THE DATE OF ISSUE. POSSIBLE UPDATES ARE AVAILABLE ON REQUEST.