



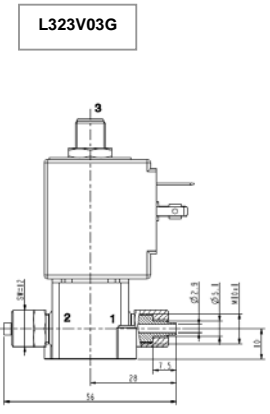
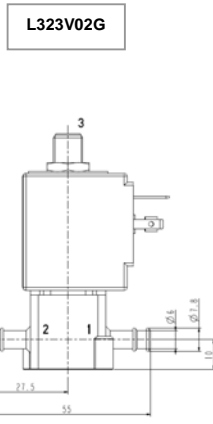
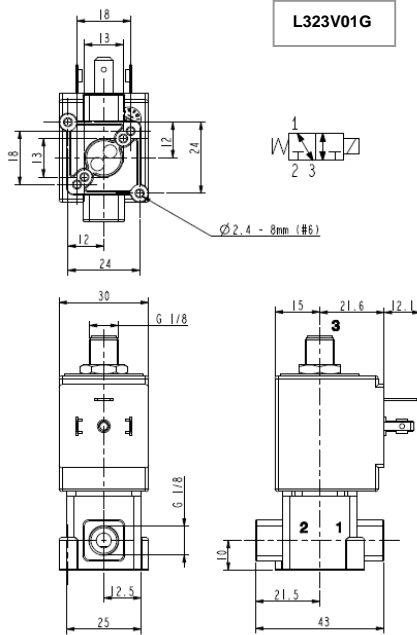
# SOLENOID VALVE

## 3/2 - U (Universal service)

### Direct acting

### G 1/8 - Barbed Ports

# L323



#### ► GENERAL FEATURES

Direct acting solenoid valve.  
 Suitable to shut off liquid and gaseous fluids; suitable for low pressure steam and applications in sterilising autoclaves (verify the compatibility of fluid with materials in contact).

#### ► TECHNICAL FEATURES

Maximum allowable pressure (PS) 10 bar  
 Opening time ~20ms  
 Closing time ~20ms  
 Fluid temperature 0°C +130°C  
 Max viscosity 5°E (~37 cStokes or mm<sup>2</sup>/s)

#### ► APPROVALS

UL (Class F) approval – for UL c.l.H: ZA34  
 IMQ CSV approval, see ZA10 data sheet for further details  
 Compliant with MD 174/2004 and Reg. CE 1935/2004



#### ► MATERIALS IN CONTACT WITH FLUID

Body PPS  
 Sealing FPM  
 Internal components Stainless steel  
 Seat PPS  
 Guide assembly Stainless steel  
 Shading ring Copper

#### ► COIL

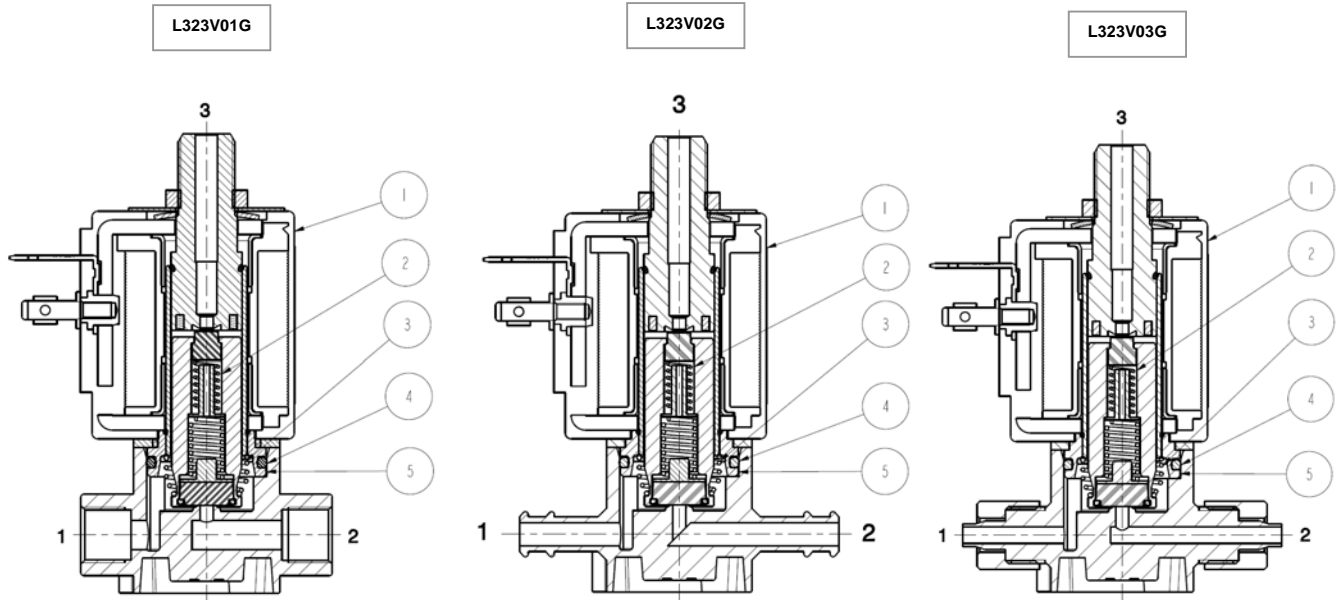
Continuous duty ED 100%  
 Encapsulation material PPS (Polyphenilsulfure) fiberglass reinforced  
 Coil insulation class F (155°C) on request class H (180°C)  
 Ambient temperature -10°C +50°C  
 Electric connections DIN 46340 - 3 poles connectors (EN175301-803)  
 Protection degree IP 67 (EN 60529) with plug connector  
 Voltages DC ZA10G: 12-24V (+10% -5%)  
 AC ZA10A: 24V/50Hz - 110V/50Hz (120V/60Hz) - 230V/50Hz (+10% -15%)  
 (Other voltages and frequencies on request)

Port size G-ISO 228	Orifice size (mm)	Dp min	Differential pressure (bar)				Kv (m <sup>3</sup> /h)	Series and type		Power absorption			Sealings	Notes	Weight (kg)
			Dp max					Valve	Coil	AC (VA)		DC (W)			
			Gases		Liquids					Inrush	Holding				
G 1/8	2,3	0	4	-	4	-	0,2	L323V01G	ZA10A	23	14	-	FPM	1 - 2 - 3	0,230
			-	4	-	4				ZA10G	-	-			
Barbed ports			4	-	4	-		L323V02G	ZA10A	23	14	-			
			-	4	-	4				ZA10G	-	-			
Barbed ports with ring nut			4	-	4	-		L323V03G	ZA10A	23	14	-			
			-	4	-	4				ZA10G	-	-			

#### ► NOTES

- Sealings : FPM = Fluoro-carbon elastomer
- IMQ CSV approval, see ZA10 datasheet for further details
- UL approved coil (E153691)
- 1 - Maximum driving torque of the pipe fittings for thread connections = 2Nm
- 2 - Only for use with steam, consider following values: PSmax 2,8 bar (max fluid temperature 130°C)
- 3 - The pressure values shown in the table refer to the potential of the valve: they can be lower depending on the connection system used
- 4 - Maximum driving torque of ring nut 1,2Nm

► SPARE PARTS



Kit description

Core kit  
 Core return spring kit  
 O-Ring guide assembly kit  
 Guide assembly  
 Coil

Kit P.N.

G3065101  
 G3022401  
 GU242800017  
 290564-001R  
 ZA10A  
 ZA10G

Consisting of:

Core pos. 2  
 N.10 core return spring pos. 3  
 N.10 O-Ring guide assembly pos. 4  
 Guide assembly pos. 5  
 Coil pos.1

► MOUNTING

- Solenoid valve can be mounted in any position; vertical with coil upwards preferred.
- When using any sealant for fittings, please check its chemical compatibility with body material (PPS).
- In case of disassembling for usual maintenance, the fixing screws of the guide assembly have to be tightened with  $0,6 \pm 0,7$  Nm torque.

THE VALIDITY OF REPORTED DATA IS REFERRED TO THE DATE OF ISSUE. POSSIBLE UPDATES ARE AVAILABLE ON REQUEST.