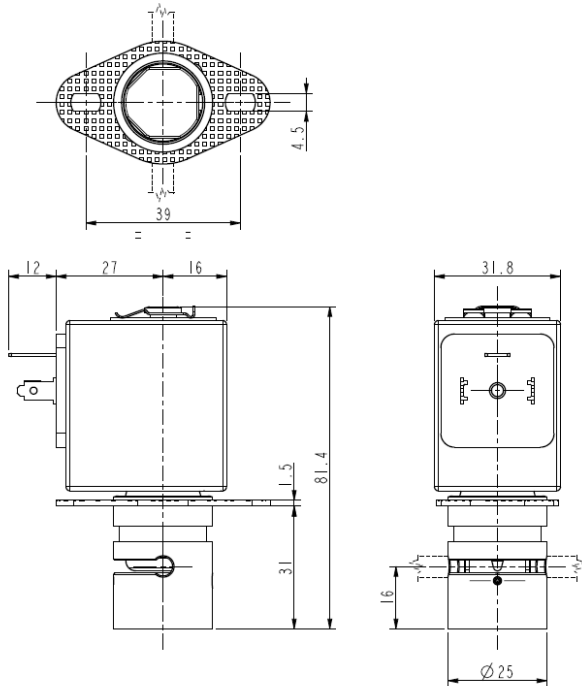




PINCH SOLENOID VALVE
2/2 – NC (Normally closed)
Direct acting

S10507-08



► GENERAL FEATURES

Pinch solenoid valve, suitable to shut off media without producing neither turbulent flows, nor dead spaces.
 High flow rate under the same conditions of internal diameter of different solenoid valves; the system allows a bi-directional through flow.
 The valves are suitable for soft SILICONE tubings or others, similar as to elasticity and hardness (50 shore A).
 Silent model.

The tubing is the only material in contact with the fluid.
 The tubings are not included in our supply.

► MOUNTING

Solenoid valve can be mounted in any position.

► MATERIALS

Body

Pinching device

Internal components

Guide assembly

Anodized aluminium

POM (reinforced acetal copolymer)

Stainless steel

Chemically nickel plated brass (Ni-P).

► COIL

Continuous duty

Encapsulation material

Coil insulation class

Ambient temperature

Electric connection

Protection degree

Voltages DC

ED 100%

PET (polyethylene terephthalate) fiberglass reinforced F (140°C)

-10°C +60°C

DIN 46340 - 3 poles connectors (EN175301-803)

IP 65 (DIN 40050) with connectors

12-24V (+10% -5%)

(Other voltages on request)

TUBINGS		Pinching strength (kg)	Series and type		Power absorption (W)	Notes	Weight (kg)
I.D. (mm)	E.D. (mm)		Valve	Coil			
1,5	3,9	0,650	S105-08	Z530A	9	1	0,270
2,5	4,1		S105-07			2	

► NOTE

1 – Special silenced model

2 – Tubing slot 2,4mm – Tubing seat Ø 4,2 mm.

- In case the tubing is not placed in its seat, the solenoid valve could operate incorrectly.

THE VALIDITY OF REPORTED DATA IS REFERRED TO THE DATE OF ISSUE. POSSIBLE UPDATES ARE AVAILABLE ON REQUEST

0605/1703