



# MICRO SOLENOID VALVE

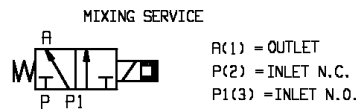
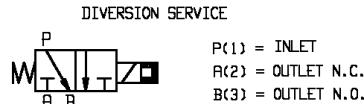
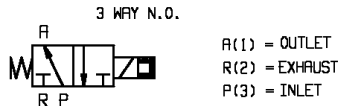
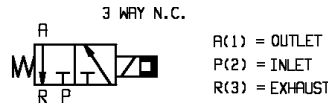
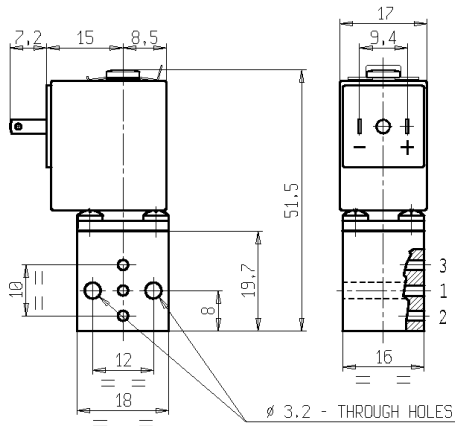
## 3/2 - US (Universal service)

### Direct acting

### Sub-base mounting

# V367

LATCHING MODEL



#### ► GENERAL FEATURES

Direct acting micro solenoid valve; minimum overall dimensions.  
 Suitable for mounting on a sub-base or directly on the equipment.  
 Valve delivered with sealing O-rings.  
 Suitable to shut off liquid and gaseous fluids (verify the compatibility of fluid with materials in contact).

#### ► TECHNICAL FEATURES

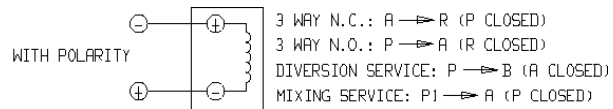
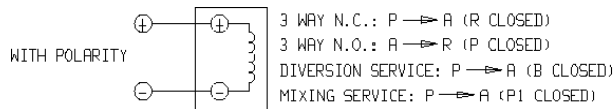
Maximum allowable pressure (PS) 16 bar  
 Opening time from ~5ms to ~10ms  
 Closing time from ~5ms to ~10ms  
 Fluid temperature -10°C +90°C  
 Max viscosity 3°E (22 cStokes o mm<sup>2</sup>/s)

#### ► MATERIALS IN CONTACT WITH FLUID

Body Brass  
 Sealing NBR  
 Internal components Brass, PEI (Polyetherimide) and stainless steel  
 Seat Brass  
 Core tube Brass  
 Shading ring Copper

#### ► COIL

Duty Latching model, polarized type, operating by impulses  
 Minimum energizing time 20ms  
 Encapsulation material PP-V0 (self-extinguishing polypropylene)  
 Insulation class A (105°C)  
 Ambient temperature -10°C +60°C  
 Electric connections DIN 46340 - 3 poles micro plug connector  
 Protection degree IP 65 (EN60529) with micro plug connector  
 Voltages DC 6-12V (+10% -10%)  
 (Other voltages on request)



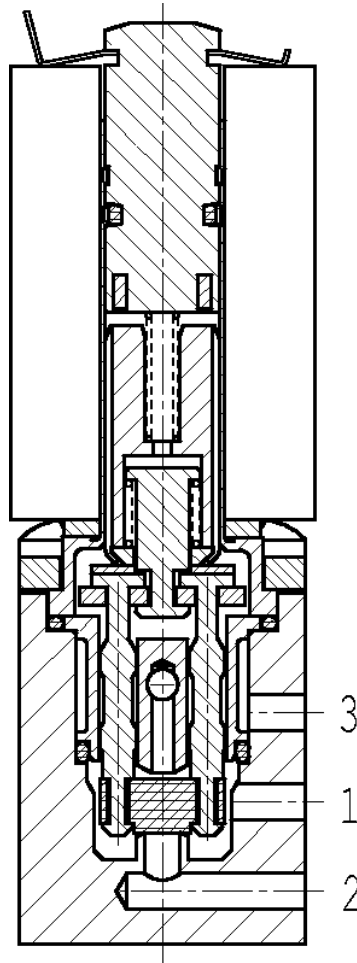
Port size	Orifice size (mm)	Differential pressure (bar)				Kv (m <sup>3</sup> /h)	Series and type		Power absorption			Sealings	Notes	Weight (kg)	
		Δp min	Δp max				Valve	Coil	AC (VA)		DC (W)				
			Gases		Liquids				Inrush	Holding					
			AC	DC	AC										DC
-	1,2	0	-	2,5	-	2,5	0,04	V367B01G	Z070A	-	-	3	NBR	1	0,090

#### ► NOTES

- These micro-solenoid valves are not suitable for stagnating media subject to vaporization which deposit solid, calcareous, incrusting residues or similar.  
 - Sealings: NBR = Nitrile-butylene elastomer.  
 1 - If used as NO only, the maximum operating pressure is 6 bar.



► SECTIONAL VIEW



► INSTALLATION

- Solenoid valve can be mounted in any position; vertical with coil upwards preferred.

THE VALIDITY OF REPORTED DATA IS REFERRED TO THE DATE OF ISSUE. POSSIBLE UPDATES ARE AVAILABLE ON REQUEST.